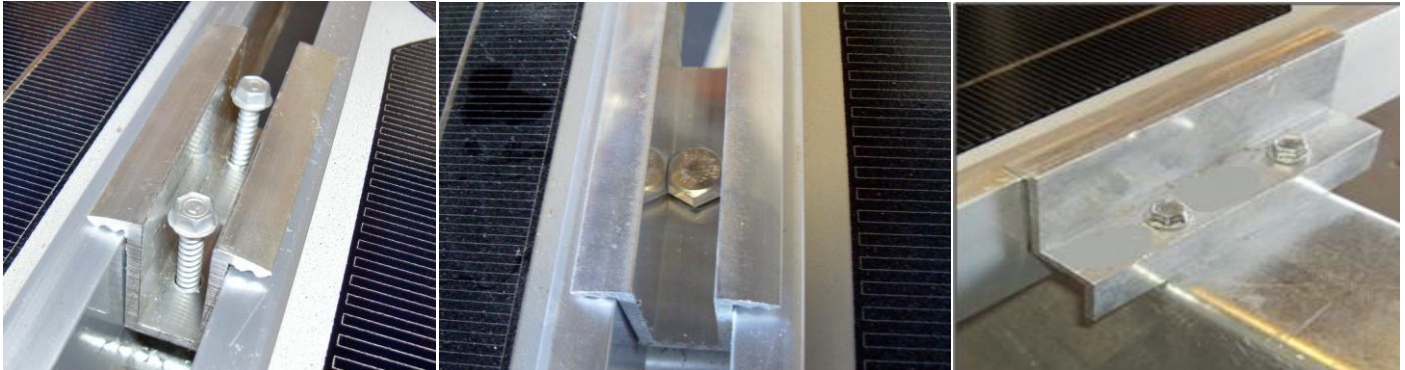


Solar Module Top Clamps

- ❖ One Middle-Clamp Size for 31 to 51mm Frames
- ❖ End-Clamp is Height Specific from 31 to 51mm
- ❖ Choice of Clamp Hardware - Bolt or Drill Screws
- ❖ Mid-Clamp Captivates Bolt Head – Hand Free
- ❖ Self Drilling Screws Replace Pre-Punched Holes
- ❖ Clamps Feature Frame Gripping Teeth

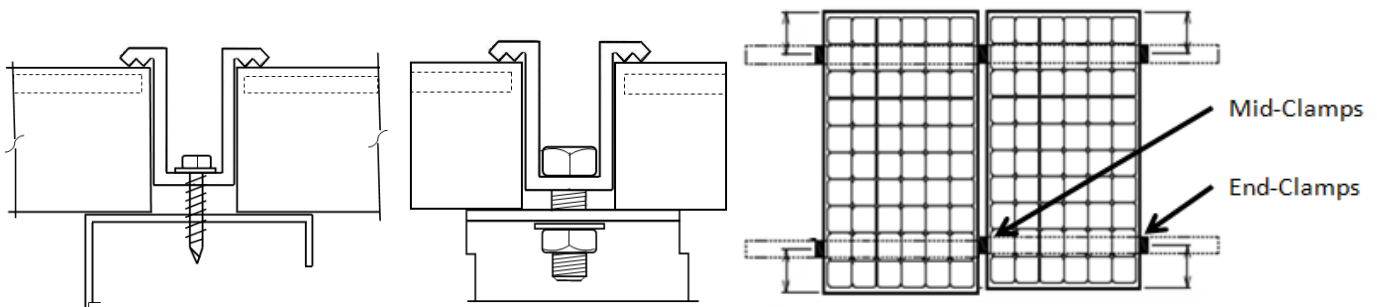


Middle Clamp with Self Drilling Screws

Middle Clamp with 5/16" Bolt

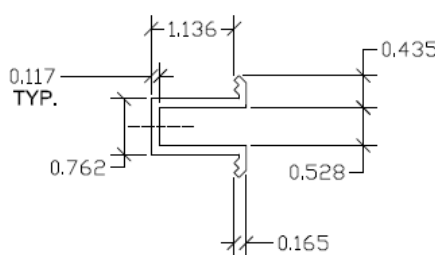
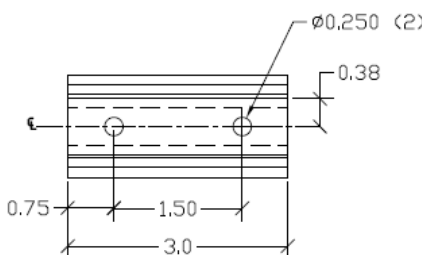
End Clamp with Self Drilling Screws

Skyline Solar Top Clamps are engineered to perform structural Top-Down attachment of aluminum solar module frames to support structures, with fastener options. Top Clamps may install using either; two #12 self drilling screws, or a single 5/16" stainless hex bolt. Fastening hardware is provided separately from top clamps. Top clamps are 6063-T5 extruded aluminum, mill finish. Top clamp attachments may be installed on the solar module's 'short end' or 'long side' of the aluminum frame. Follow the specific solar module manufacturer's installation instructions for clamp placement guidelines. Contact Skyline Sales for pricing.



Middle Clamp with Self Drilling Screws & with 5/16" Bolt

- Two (2) Middle Clamps are required between adjacent modules in a row.
(If: row = 7 modules, Then: Middle Clamp quantity = 12).
- End Clamps are positioned at each end of the first and last module in a row.
Four (4) end-clamps are needed for every row.



Note: Use only #12-14 self drilling screws which are dual heat treated for ductility and resistant to hydrogen-assisted cracking (HAC), with a galvanic barrier coating for corrosive environments-salt spray tested 1000 hours per ASTM B117