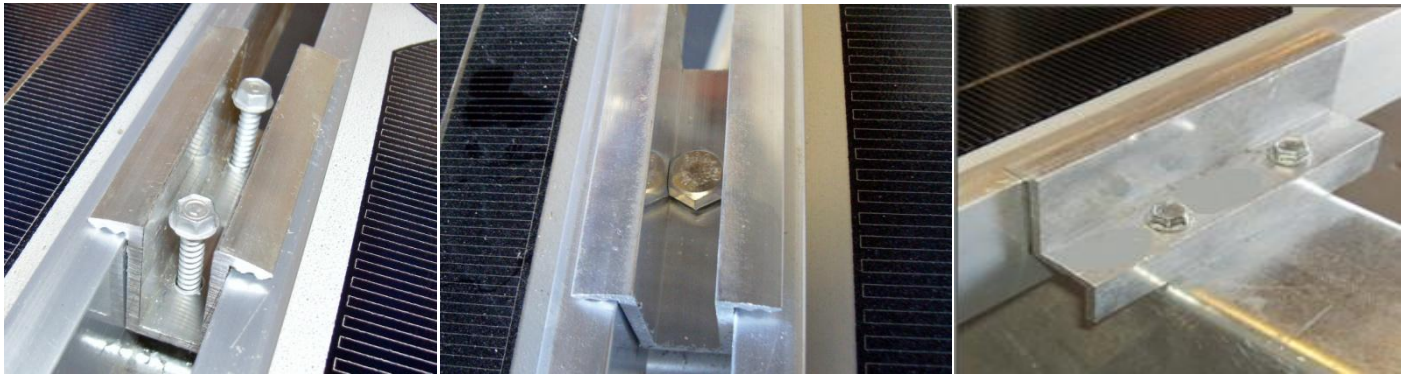


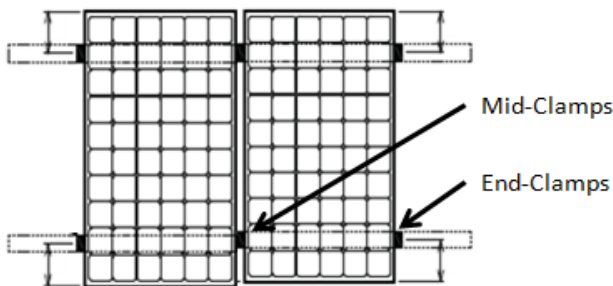
Solar Module Top Clamps

- ❖ One Middle-Clamp Size for 31 to 51mm Frames
- ❖ End-Clamp is Height Specific from 31 to 51mm
- ❖ Choice of Clamp Hardware - Bolt or Drill Screws
- ❖ Mid-Clamp Captivates Bolt Head – Hand Free
- ❖ Self Drilling Screws Replace Pre-Punched Holes
- ❖ Clamps Feature Frame Gripping Teeth



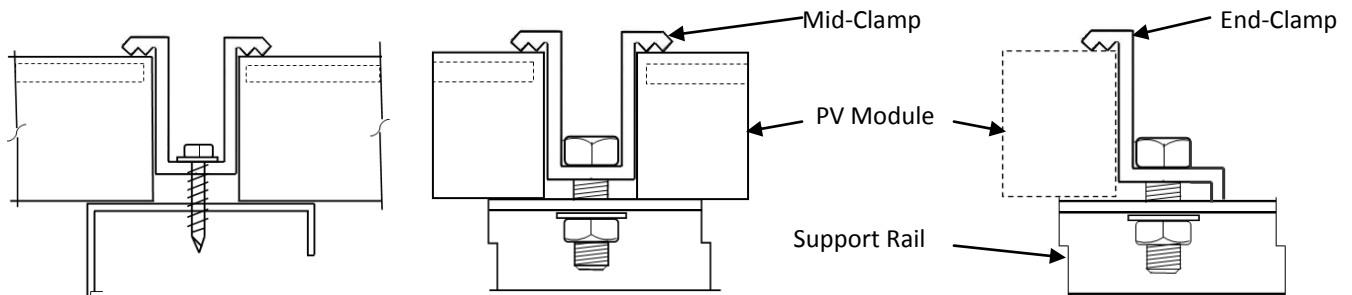
Middle Clamp with Self Drilling Screws Middle Clamp with 5/16" Bolt End Clamp with Self Drilling Screws

Skyline Solar Top Clamps are engineered to perform structural Top-Down attachment of aluminum PV module frames to support structures, with fastener options. Top Clamps may install using either; two #12 self drilling screws, or a single 5/16" stainless hex bolt. Fastening hardware is provided separately from top clamps. Top clamps are 6063-T5 extruded aluminum, mill finish. Top clamp attachments may be installed on the solar module's 'short end' or 'long side' of the aluminum frame. Follow the PV module manufacturer's installation instructions for specific clamp locations and placement guidelines. Contact Skyline Solar for pricing.



- Use only #12-14 (#3 point) self drilling screws which are dual heat treated for ductility and resistant to hydrogen-assisted cracking (HAC), with a galvanic barrier coating suitable for dissimilar metals & corrosive environments-salt spray tested 1000 hours per ASTM B117.
- Follow Skyline Solar Top Clamp Installation Instructions for proper assembly.

- Two (2) Middle Clamps are required between adjacent modules in a row.
(If: row = 7 modules, Then: Middle Clamp quantity = 12).
- Two End Clamps are positioned at each end of the first and last module in a row.
(Four end-clamps are needed for every row).



Middle Clamp with Self Drilling Screws & with 5/16" Bolt

End Clamp with 5/16" Bolt

Top Clamp Selection Guide

Module	End Clamp-1 Hole	End Clamp-2 Holes	Mid Clamp-1 hole	Mid Clamp-2 holes	Self Drilling Screws	5/16"-18 Bolt	
Mm Inch	item # (Bolted)	Item # (SDS)	item # (Bolted)	Item # (SDS)	Length	Length	
31	1.22	130001-031	130001-031A	MC-3	MC-2	1"	1"
32	1.26	130001-032	130001-032A	MC-3	MC-2	1"	1"
33	1.30	-----	-----	MC-3	MC-2	1"	1"
34	1.34	130001-034	130001-034A	MC-3	MC-2	1"	1"
35	1.38	130001-035	130001-035A	MC-3	MC-2	1"	1"
36	1.42	130001-036	130001-036A	MC-3	MC-2	1-1/2"	1-1/4"
37	1.45	-----	-----	MC-3	MC-2	1-1/2"	1-1/4"
38	1.50	130001-038	130001-038A	MC-3	MC-2	1-1/2"	1-1/4"
39	1.54	-----	-----	MC-3	MC-2	1-1/2"	1-1/4"
40	1.57	EC-3	EC-1	MC-3	MC-2	1-1/2"	1-1/4"
41	1.61	-----	-----	MC-3	MC-2	1-1/2"	1-1/4"
42	1.65	130001-042	130001-042A	MC-3	MC-2	1-1/2"	1-1/4"
43	1.69	-----	-----	MC-3	MC-2	1-1/2"	1-1/4"
44	1.73	130001-044	130001-044A	MC-3	MC-2	1-1/2"	1-1/4"
45	1.77	130001-045	130001-045A	MC-3	MC-2	1-1/2"	1-1/4"
46	1.81	EC-4	EC-2	MC-3	MC-2	2"	1-1/2"
47	1.85	-----	-----	MC-3	MC-2	2"	1-1/2"
48	1.89	130001-048	130001-048A	MC-3	MC-2	2"	1-1/2"
49	1.93	-----	-----	MC-3	MC-2	2"	1-1/2"
50	1.97	130001-050	130001-050A	MC-3	MC-2	2"	1-1/2"
51	2.01	130001-051	130001-051A	MC-3	MC-2	2"	1-1/2"

